

Holmewood Road

, SW2



Holmewood Road

Keating Estates are proud to present this fantastic one-bedroom Victorian conversion flat, located on a quiet residential street in a sought-after pocket of South London.

Holmewood Road, , SW2

1 bedroom Flat to let

£403 Per Week

Part furnished



Features



- One double bedroom
- Modern family bathroom
- Open plan reception and kitchen
- Bright and airy
- Characterful features
- Skylights
- Victorian conversion flat



Property details

Keating Estates are proud to present this fantastic one-bedroom Victorian conversion flat, located on a quiet residential street in a sought-after pocket of South London.

Occupying the top floor of a charming period property, this spacious flat is modern and bright, offering a well-designed layout and thoughtful finishes throughout. The heart of the home is the open-plan kitchen and reception area, featuring stylish exposed brickwork and large skylights that flood the space with natural light. The room feels both contemporary and welcoming perfect for entertaining or relaxing in comfort. The generous double bedroom boasts a beautiful period feature fireplace, adding character and charm, while the modern family bathroom completes the property with sleek finishes and clean lines.

Location-wise, it's hard to beat. Holmewood Road is a quiet and peaceful street, perfectly positioned between Brixton, Streatham Hill, Clapham, and Balham. Tucked just off Brixton Hill, the flat offers the best of both worlds close to vibrant amenities yet far enough removed to enjoy a sense of calm.

Brockwell Park, one of London's most loved green spaces, is within a 10 minute walk, and Herne Hill station is a short stroll away across the park. Brixton tube station is approximately is also within walking distant down the hill, offering quick access to the Victoria Line and a lively mix of restaurants, cafes, markets, and nightlife. Tulse Hill station, with direct rail links to London Bridge, is also within easy reach.

Internal area: sq ft Council tax band C EPC rating C (69)



K

Holmewood Road

1 Bed flat

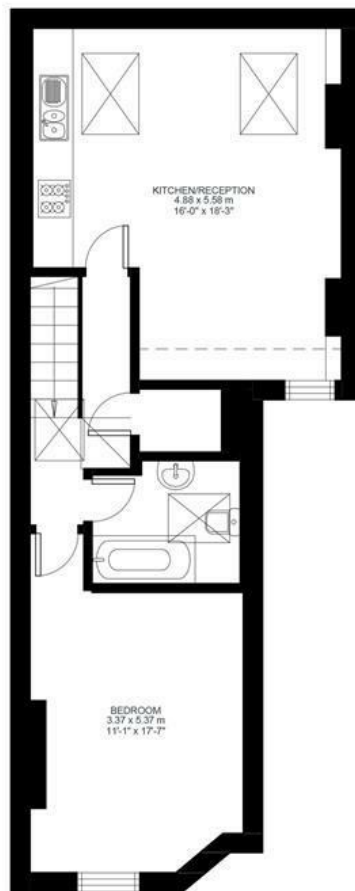
Approx internal area:

586 sqft 54 sqm

While we do try our very best, floor plans are produced as a guide only and we take no responsibility for the precise accuracy with which any property is represented



First Floor
Entrance



First Floor



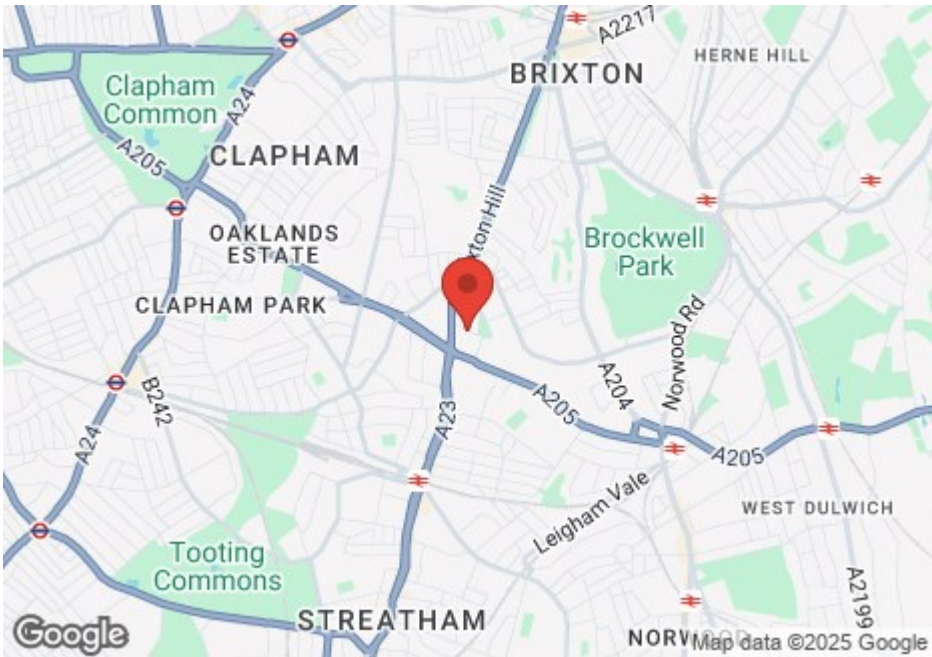






Brixton highlights

Brixton is a melting pot of culture, cuisine and creativity. An explosion of inventive, new restaurants, pop-ups, fashion stores and art galleries sit alongside the many great pubs, music venues and nightclubs that have been around for years. Transport links are excellent, with London Underground (Victoria Line) trains reaching central London in 12 minutes. If you're craving green space, Brockwell Park and its famed Art Deco lido is close by. Brixton brings together all the best things about London and is one of the most vibrant and diverse places to live south of the river.



Nearest stations

- Herne Hill** - 14 mins walk, 0.7 miles
- Brixton** - 18 mins walk, 1 mile
- Brixton BR** - 20 mins walk, 1.1 miles
- Tulse Hill** - 22 mins walk, 1.1 miles
- Streatham Hill**- 26 mins walk, 1.2 miles

Front door to work

- Victoria** - 25 mins
- South Bank** - 31 mins
- London Bridge** - 32 mins
- The City** - 34 mins
- Canary Wharf** - 42 mins

020 7095 5777
rent@keatingestates.com
keatingestates.com